

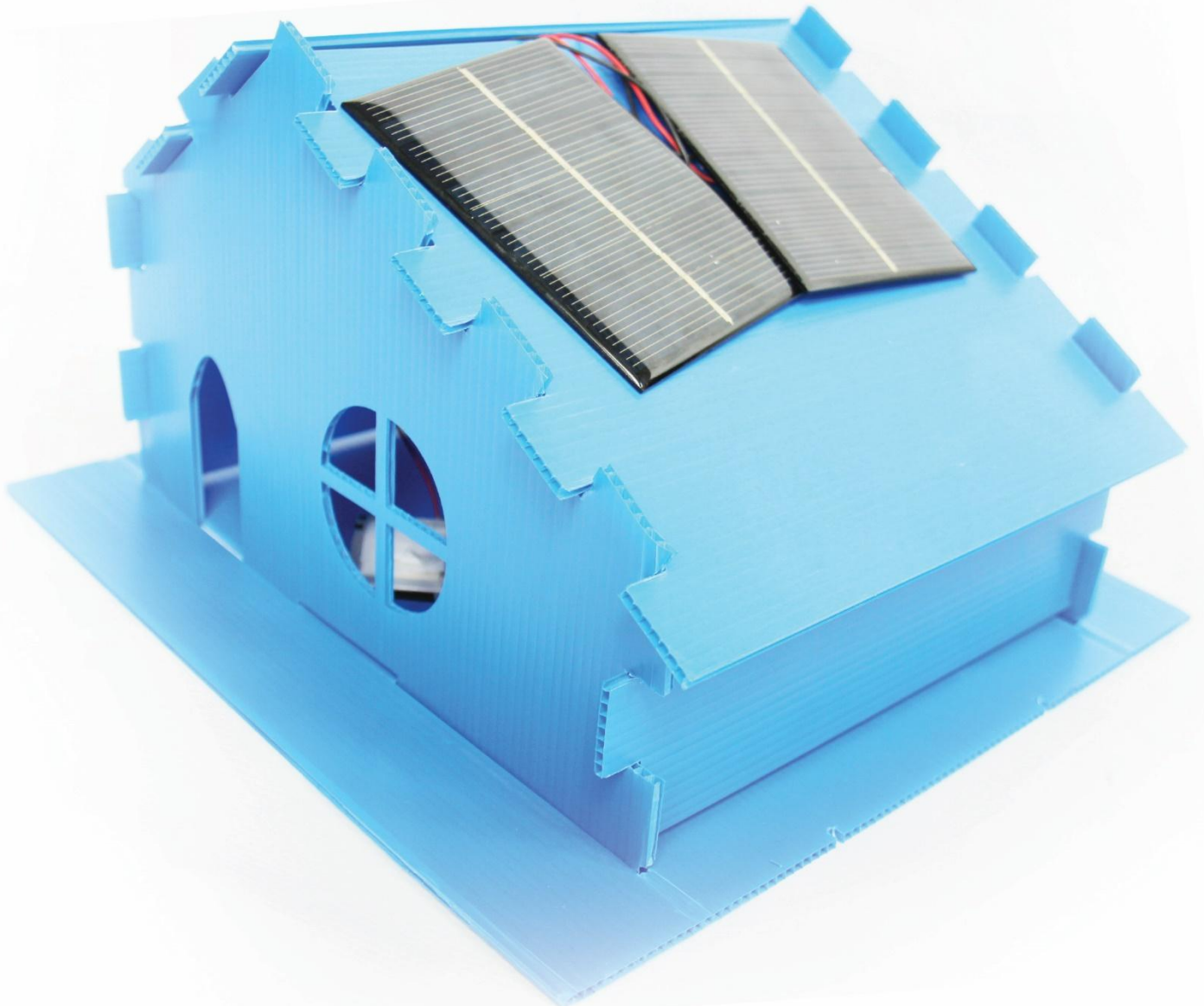


LearnOBots  
Think Explore Make

SOLAR HOUSE

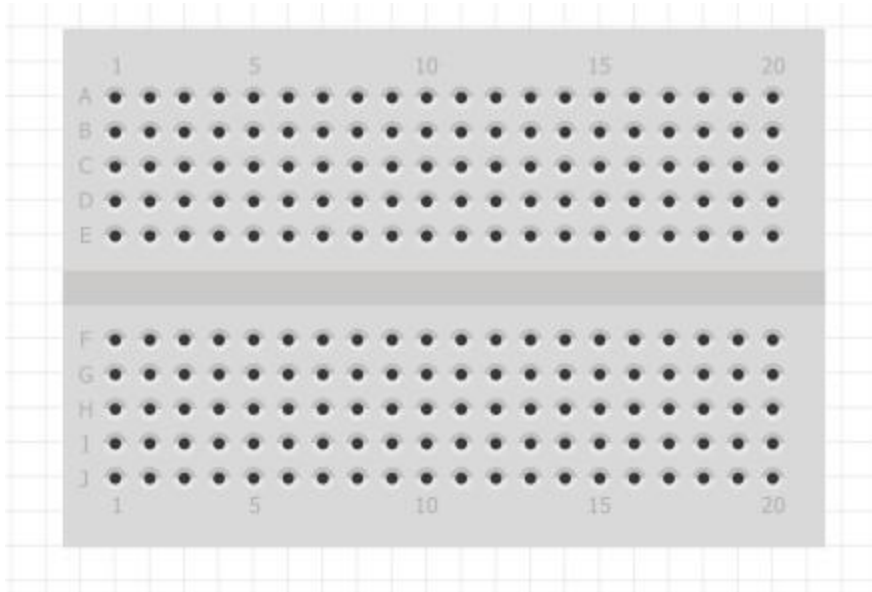
10

MAKING ENERGY SAVING  
LIGHTS

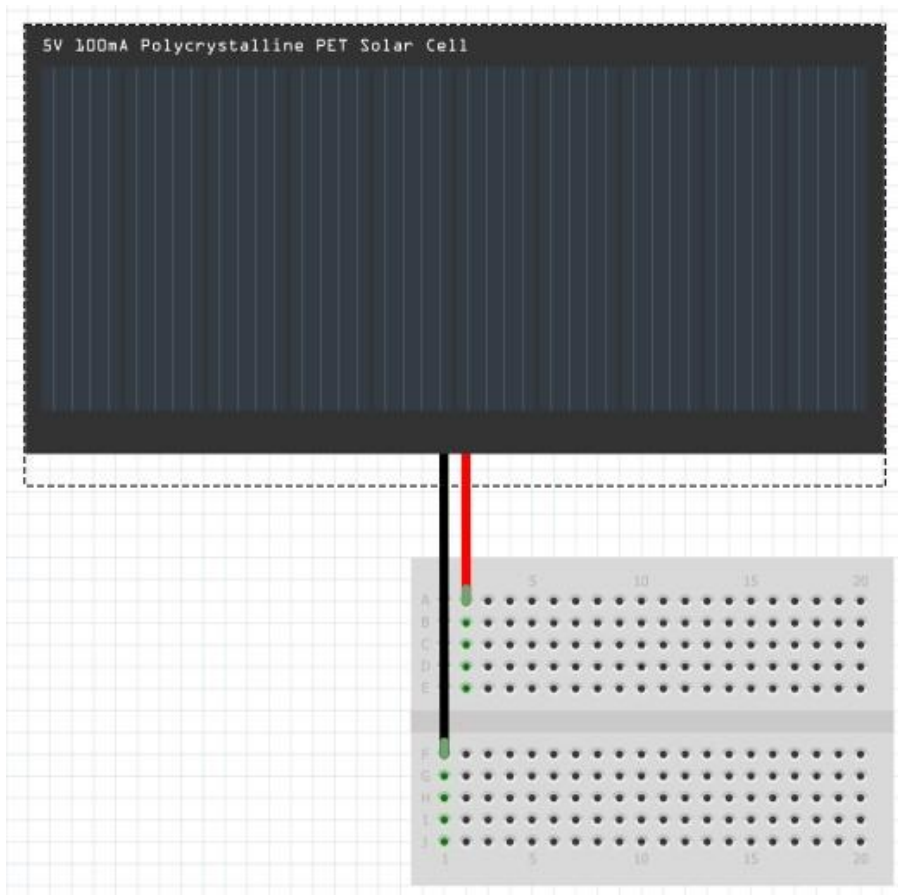


# Activity Manual for Solar House

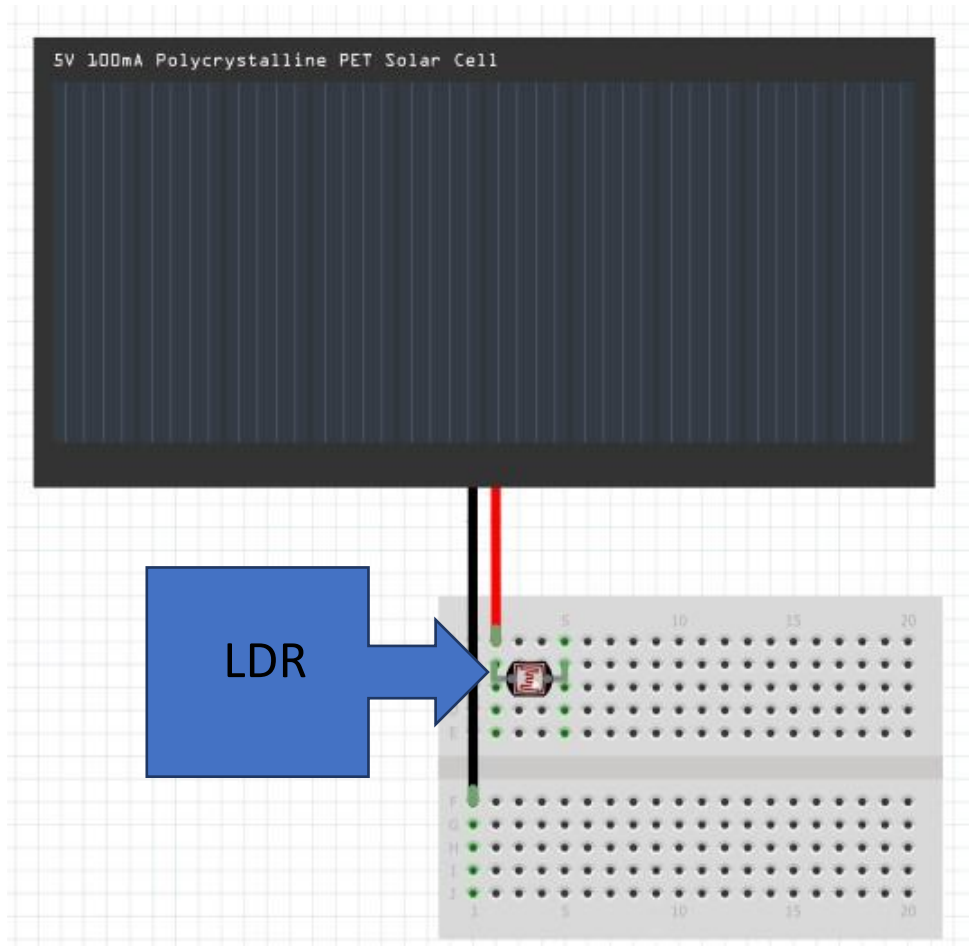
1. Take a bread board.



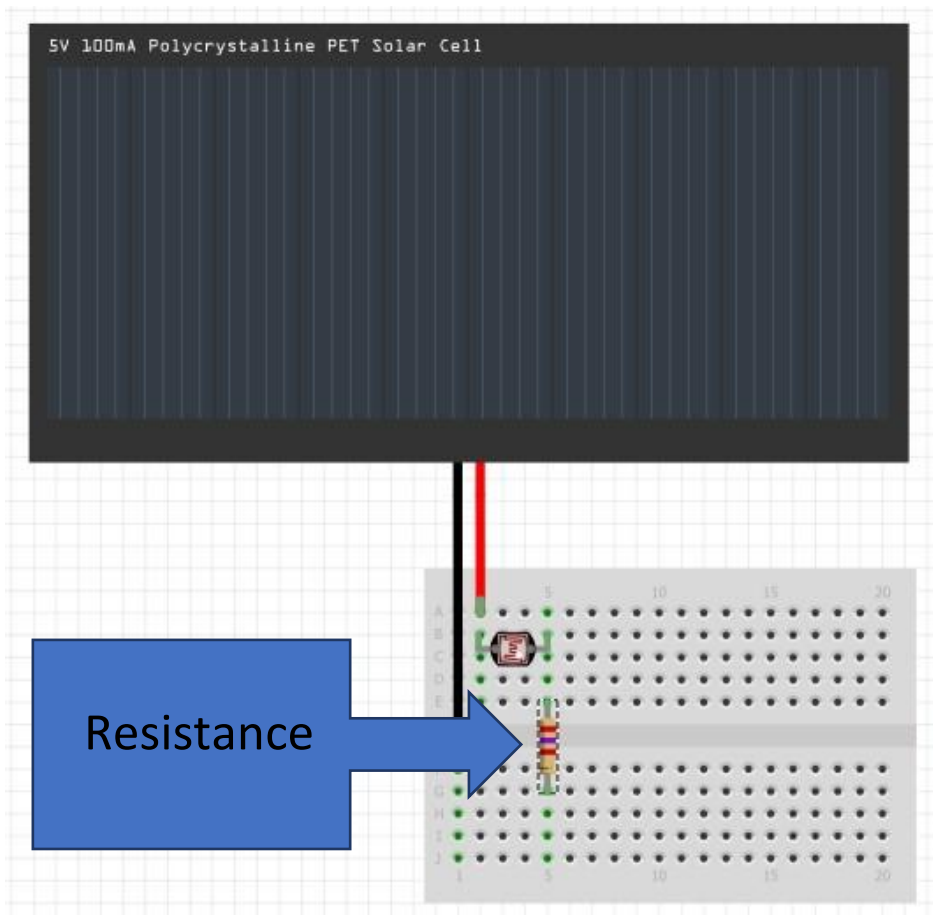
2. Attach a Solar Panel as shown.



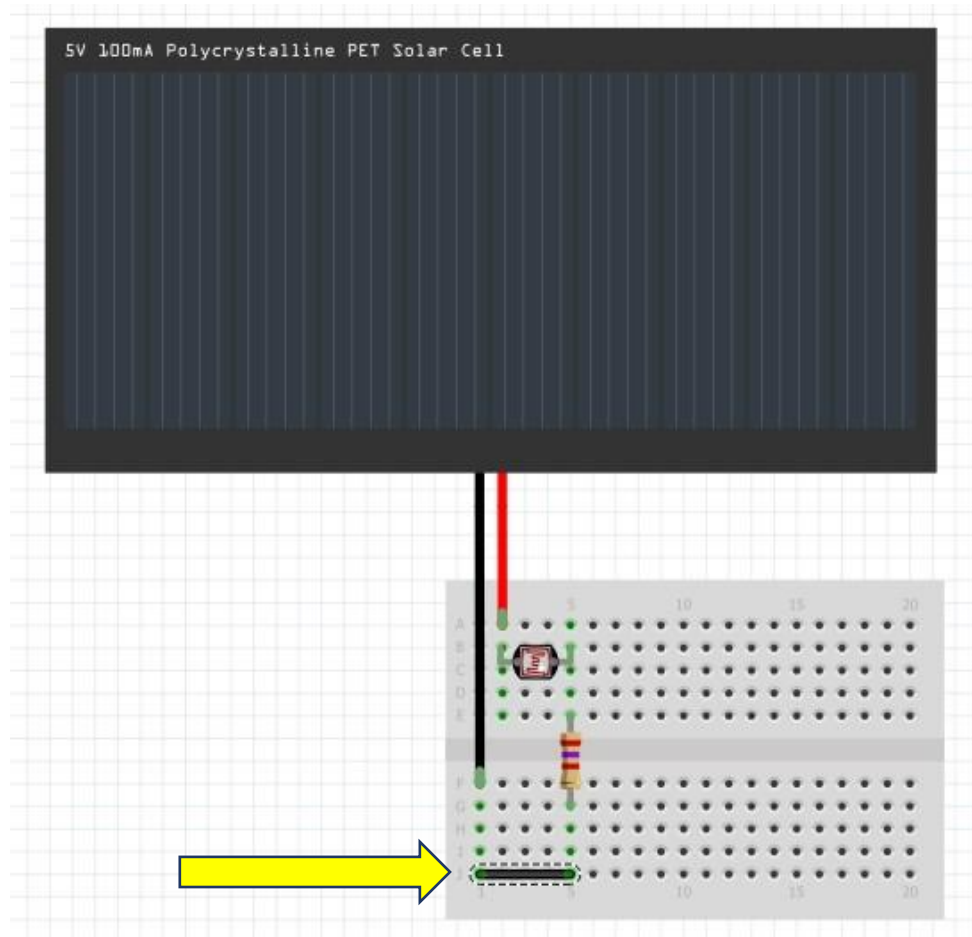
3. Attach a LDR as shown.



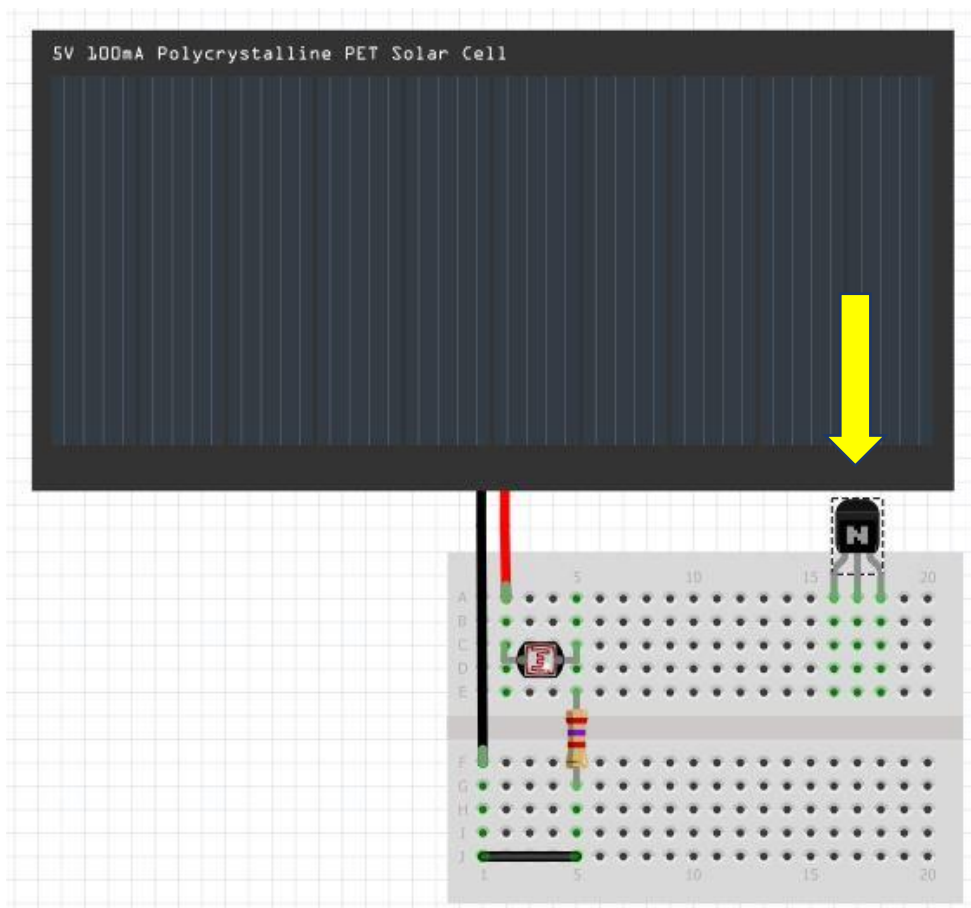
4. Connect a resistance of 2.7 K Ohm (2,700 Ohm) as shown. (To read the color code of a resistance kindly refer to the How to Read the Color Code of a resistance Manual from our website)



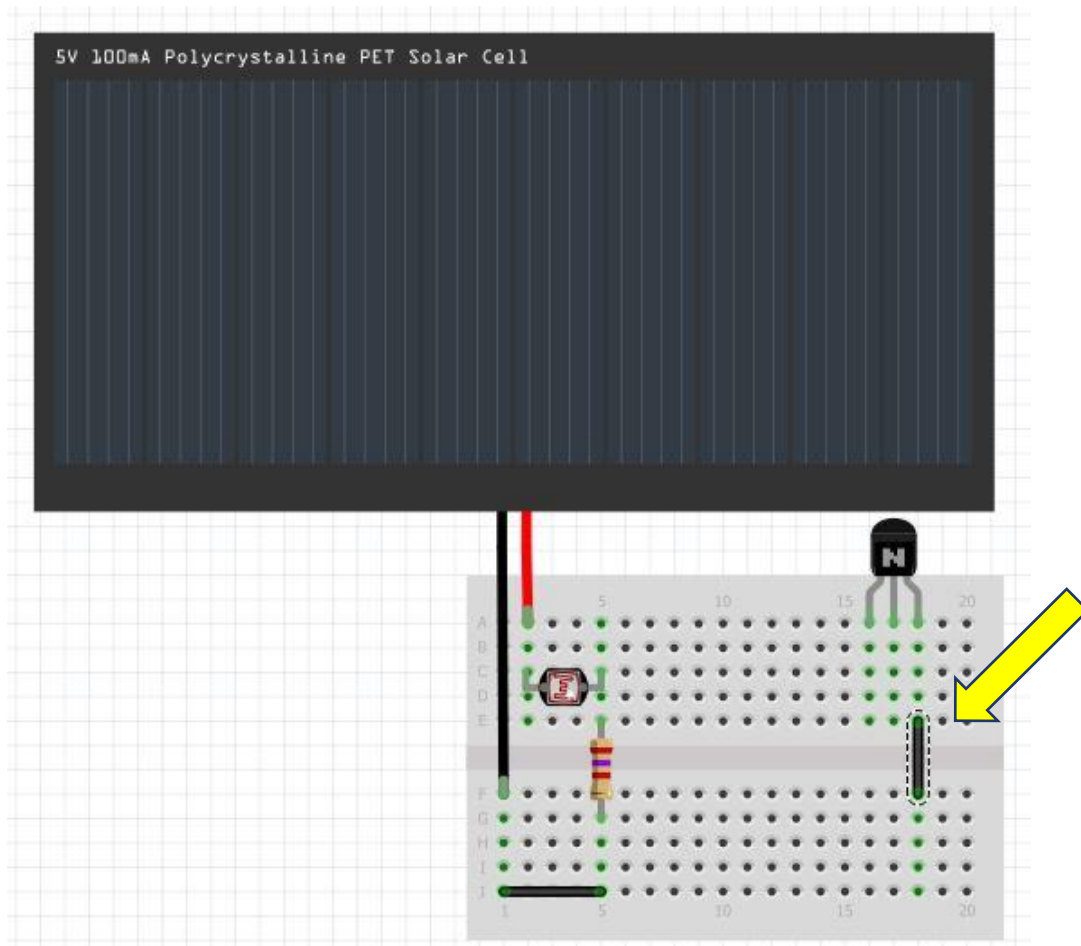
5. Make connections as shown.



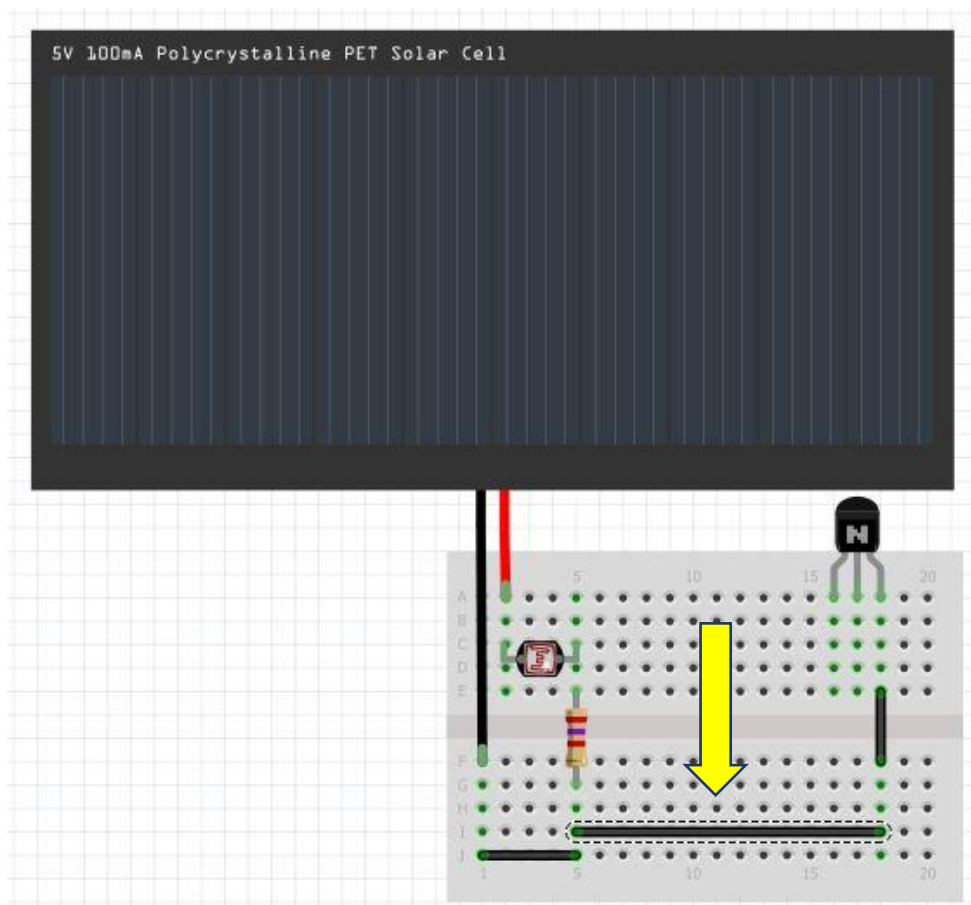
6. Connect the Transistor Switch as shown.



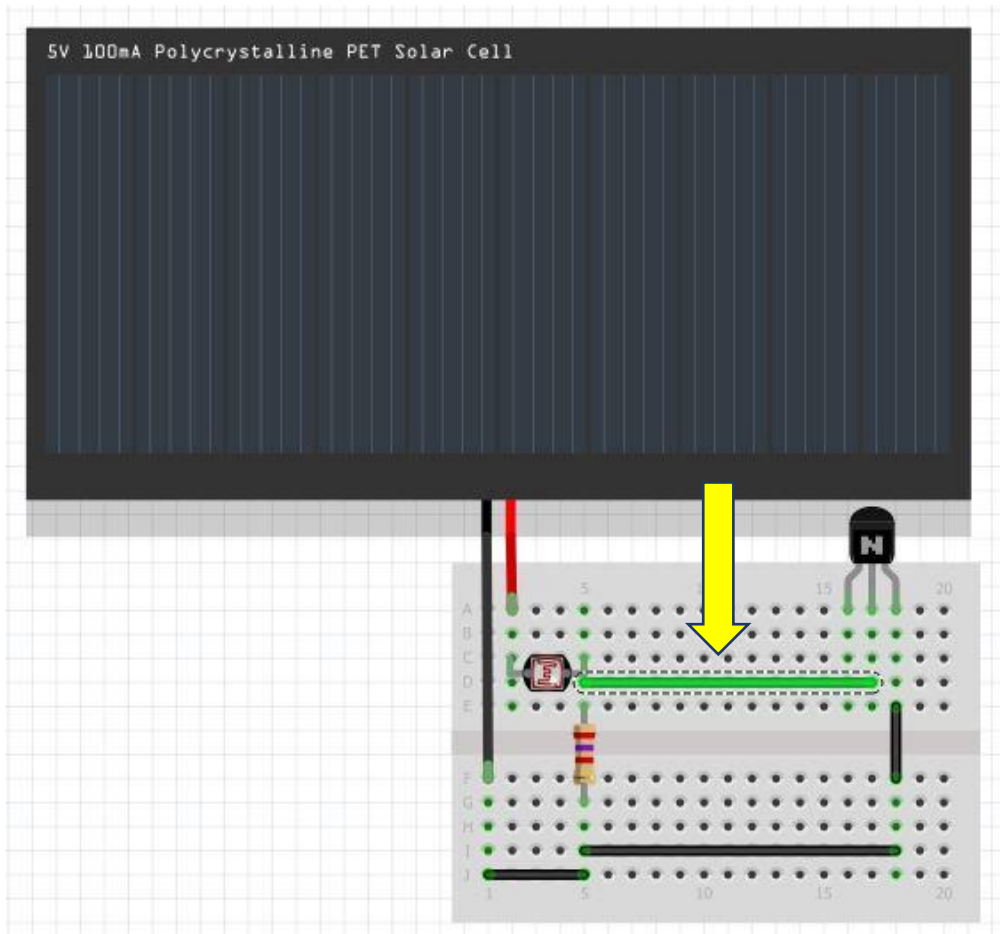
7. Attach the connecting wire as shown.



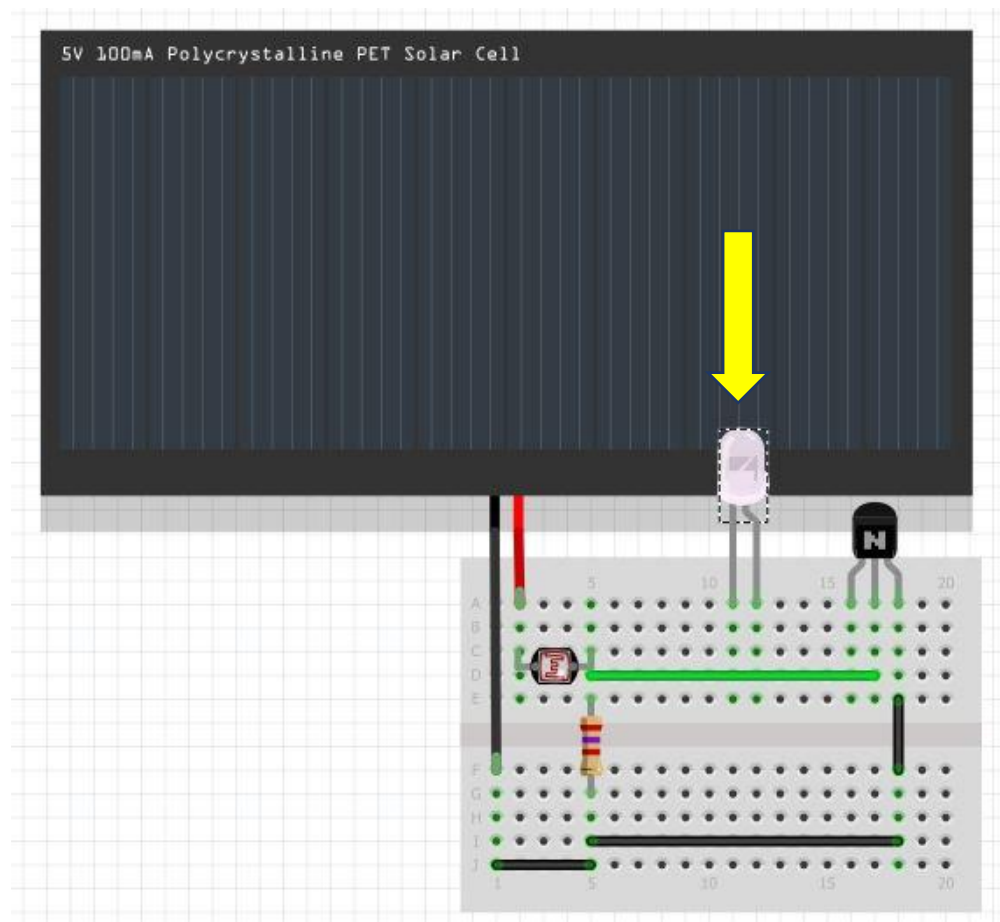
8. Make the connection as shown.



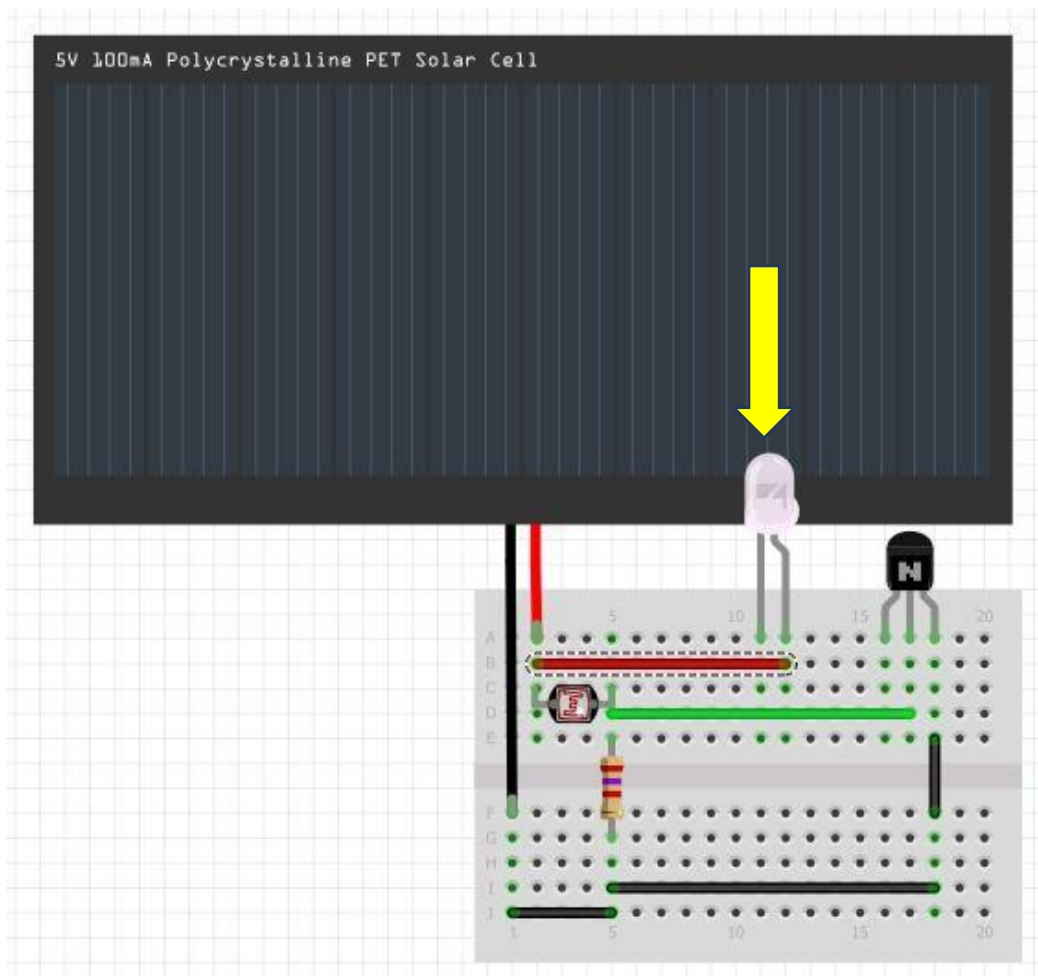
9. Make connection as shown.



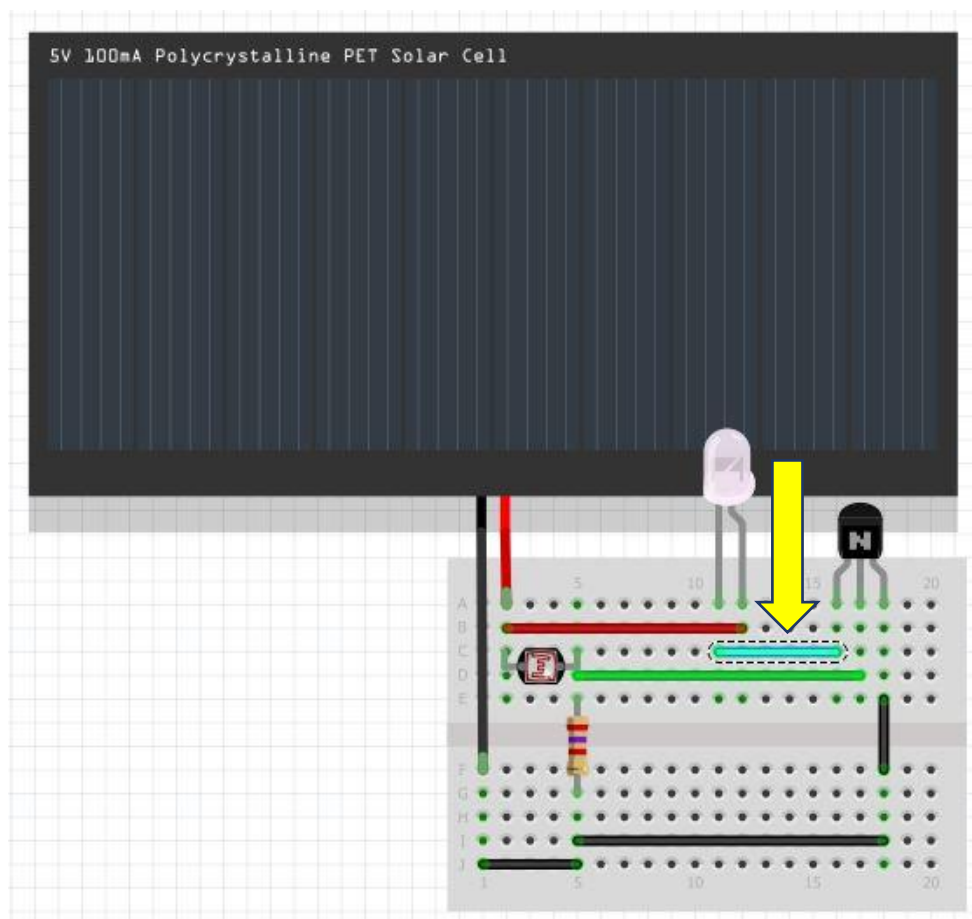
10. Insert the LED and connect its terminals as shown below. Longer leg is the +ve terminal and smaller is the -ve one.



11. Make the connection as shown.



12. Make the Connection as shown.



13. Congrats! Your circuit is now complete.
14. Now take your circuit out in the bright sunlight. Put your thumb on the LDR and the LED will remain OFF. But once you remove your thumb from the LDR, it will detect the sunlight and will start to glow.